



# The Human Side of Web Accessibility

**Kristine Neuber**, IT Accessibility Coordinator

**Gerson Galicia**, Testing Specialist

June 23, 2020



# Today's Agenda



*Kristine Neuber*  
*IT Accessibility Coordinator*



*Grady*



*Gerson Galicia*  
*Testing Specialist*

- Session will cover the following:
  - How people with disabilities access the web.
  - Potential barriers encountered on inaccessible web sites

# Web Accessibility: What does it mean?

- People with disabilities can perceive, understand, navigate, and interact with information on the web.
- Regardless of their disability or the technology they use to access the site.



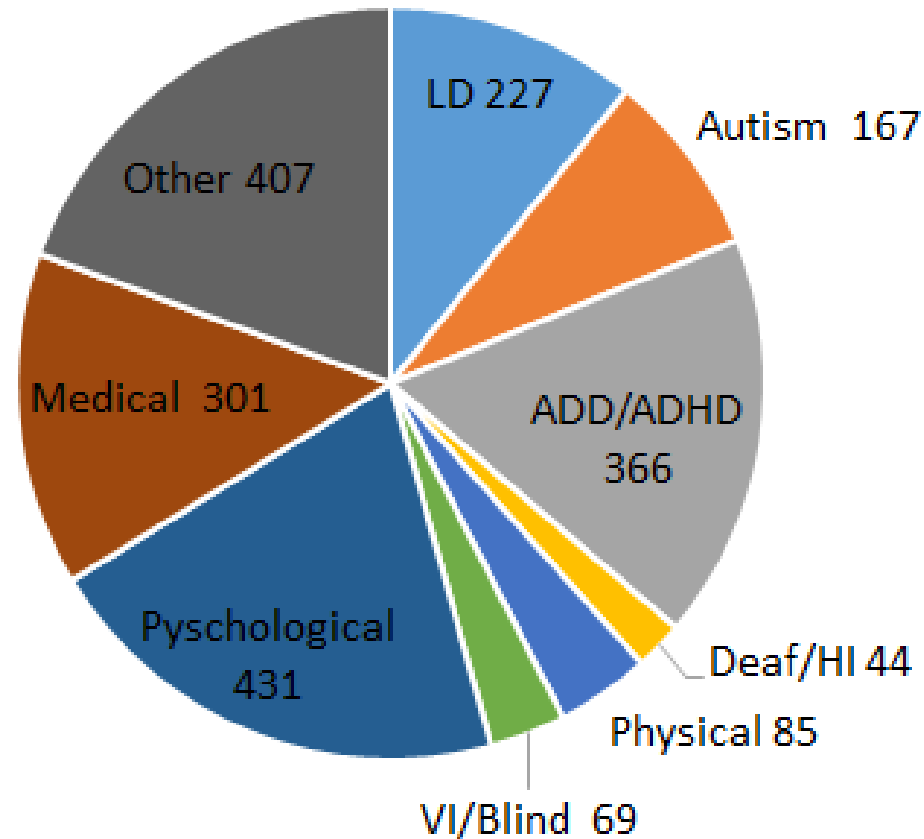
This is NOT Accessible – help!

# BEYOND LAWS & REGULATIONS

WCAG 2.1 AA STANDARDS =  
ACCESS FOR ALL

---

# Mason Students with Disabilities 2,097



# How do People with Disabilities Access Digital Content?



Physical Disabilities

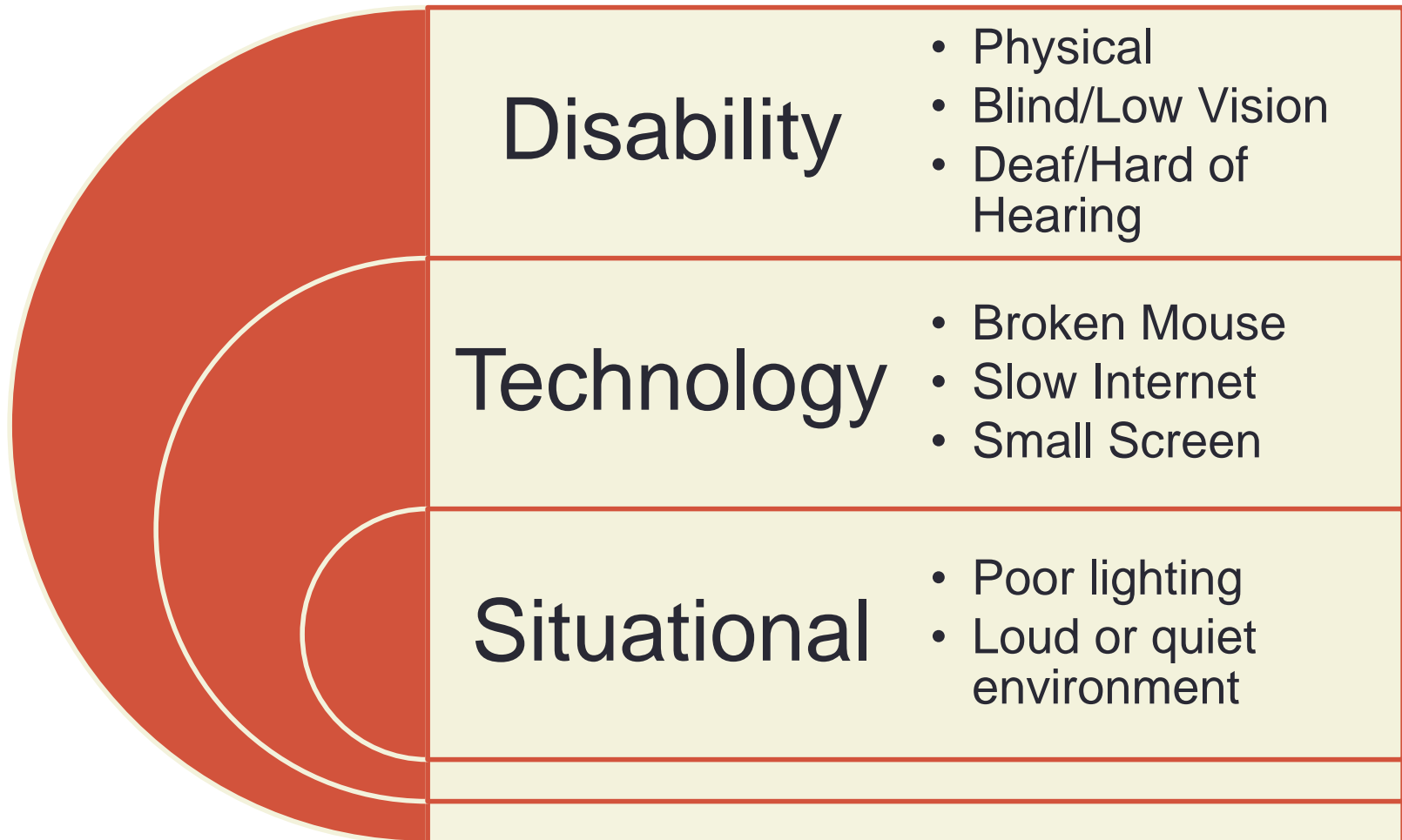


Vision Impairment



Hearing Impairment

# Web Accessibility Benefits All



# The no mouse challenge



- Technology breaks...



- People who do not have the use of their hands may not be able to use a mouse



- People with who are blind cannot use a mouse.

- Not to worry – we have not always had mice..  
mouses... (whatever works for you).

- Your web site or application should operate without a mouse too.





# Assistive Technology Used by People with Physical Disabilities

- Alternative Keyboards
- Voice Recognition
- Eye Gaze

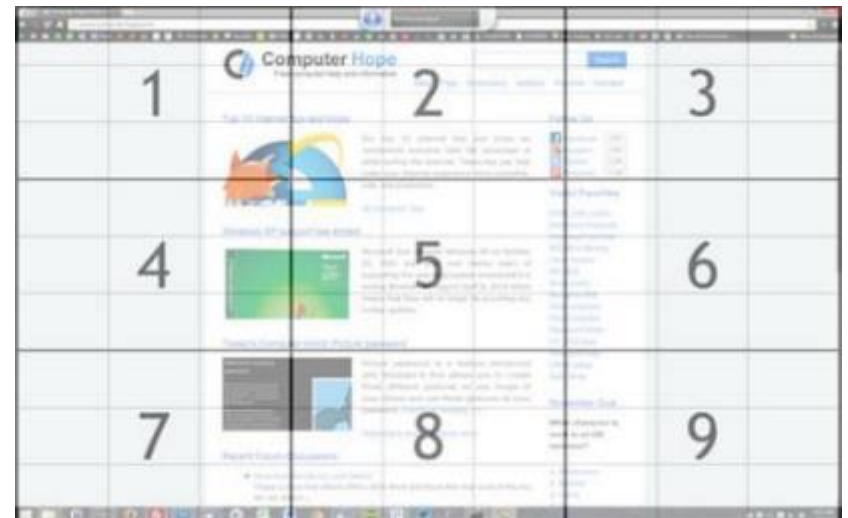


[Keyboard Compatibility Video](#)



# Voice Recognition

- Voice commands such as “Tab Key”, “Press Enter”
- Say the name of the link to activate.
- Use Mouse Grid
- [Voice Recognition Video](#)





# Eye Gaze and Head Control

- Need to be able to look and maintain gaze on an item to select it.

Links, buttons, form fields, or an onscreen keyboard for typing

Want to try it – Explore Camera Mouse.

<http://www.cameramous.org/>



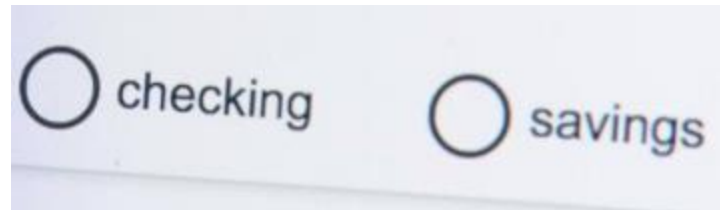
Evedaze Edge User: Cliff Warren

[Eye Gaze Video](#)



## Potential Barriers for Eye Gaze

- Small target areas



- Lack of a Cursor Focus Indicator



- Time limits



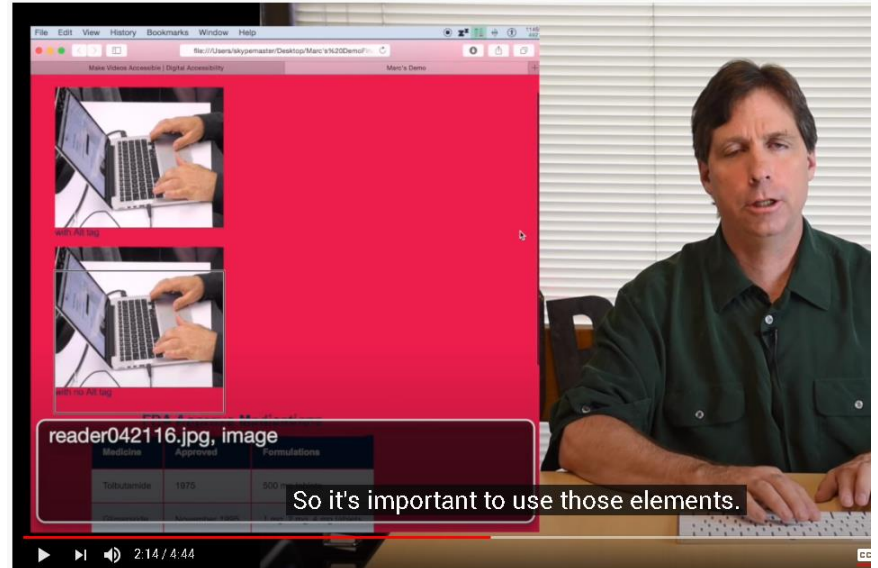


# Screen Reading Technology

Screen reader users cannot use the mouse

Must rely on keyboard commands such as Tab, Enter, and specific keystrokes to navigate

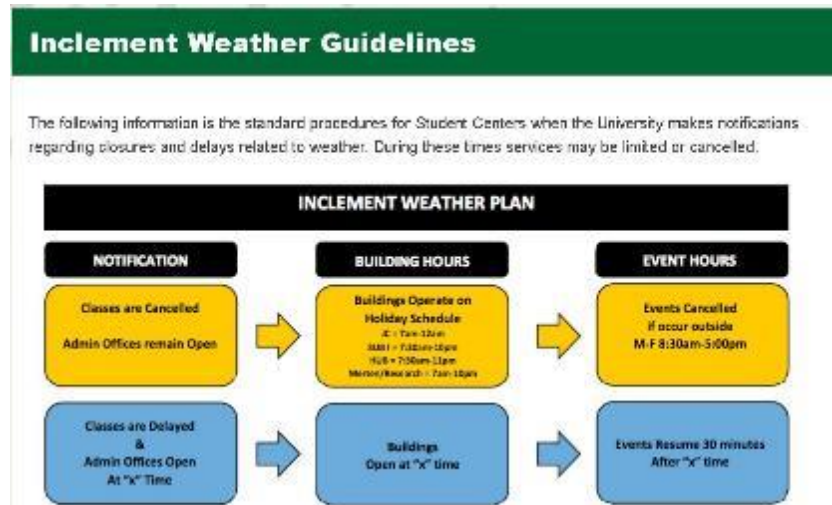
If images are not labeled you may hear a long list of numbers



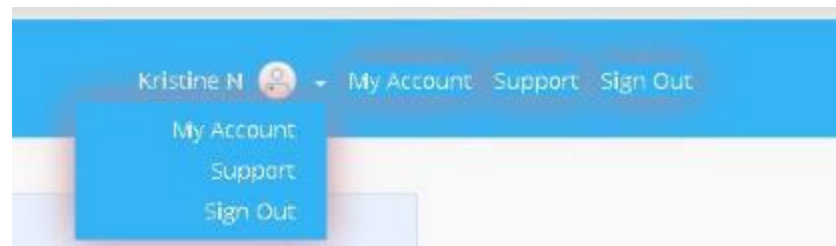


# Potential Barriers for Screen Readers

- Missing Alternative Text for Images – Bonus if you have a slow internet connection the alt-text will show before the image loads.

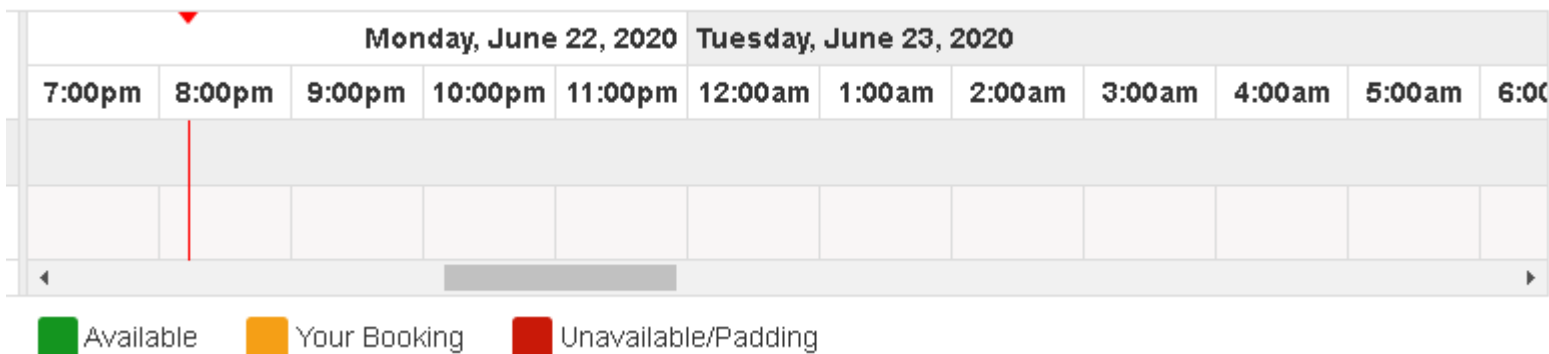


- MouseOver Only





# Use of Color



Good High Contrasting Colors



Poor Low Contrasting Colors



Tell us who you are. (required fields in red)

Company:

Salutation: (please select)

First name:

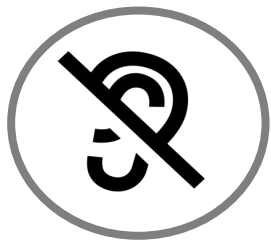
Last name:

Job title: (please select)

Phone:  e.g., 415-555-1111

Web address:  http://

E-mail:



## Hard of Hearing or Deaf



Loud or Quiet Environments



# Next Steps

More Target Training Workshops in coming weeks...

**July – DIY...Web Accessibility Testing Tools (Kristine Neuber)**

- **Creating Accessible Documents Series, June 30/July 2 (Robert Starr)**
  - June 30 – DIY...Making your Word and PPT Documents Accessible
  - July 2 – DIY...Making your PDF Documents Accessible
- **Creating Accessible Audio and Video Series, July 7/July 9 (Robert Starr)**
  - July 7 – DIY...Adding Captions to YouTube and Vimeo
  - July 9 – DIY...Live Captioning *on a Budget*
- **Assistive Technology Series, July 14/July 16 (Tiffany O’Neal)**
  - July 14 – Notetaking Tools for Online Courses (Audio Notetaker, Otter.ai, etc.)
  - July 16 – Text-to-Speech Solutions (Read & Write, Natural Reader, Built-ins, etc.)

# Please Visit Our Website

ATI Website, <http://ati.gmu.edu>

**Request a Web Accessibility Review**

<https://ati.gmu.edu/requesting-services/>



## Direct Email

- Please email us at [ati@gmu.edu](mailto:ati@gmu.edu) if you would like us to contact you directly.

# Contact Information

- ATI Office
  - Aquia Building, Rm. 238
  - Mail Stop: 6A11
  - Phone: 703-993-4329
  - Email: [ati@gmu.edu](mailto:ati@gmu.edu)
  - Web: <http://ati.gmu.edu>